

FNC Tacho Analog Output Versus Speed

Current / voltage output



FNC Tacho Analog Output Versus Speed 50 mm & 58 mm Housing



Features

- Industry 58 mm shaft version
- Industry 58 mm end hollow shaft version
- Robust mechanical and electrical construction
- Protection up to IP67
- 0-10V voltage / 4-20mA current output versus speed

Output Options :

- 0-10VDC Voltage
- 0-5VDC Voltage
- 4-20mA current

Technical data - electrical ratings

Voltage supply	10-30VDC
Protection:	Output short circuit protection. Reverse polarity protection
Consumption w/o load	≤60 mA (24 VDC)
Output signals	0-10VDC Voltage output 0-5VDC Voltage output 4-20mA current output
Measuring range	up to 6000 rpm
Interference immunity	DIN EN 61000-6-2
Emitted interference	DIN EN 61000-6-4
Approval	CE

Technical data - mechanical design

Dimensions (flange)	ø58 mm
Shaft loading	≤140 N axial ≤240 N radial
Protection DIN EN 60529	IP54, IP65
Operating speed	≤10000 rpm
Starting torque	≤0.025 Nm (IP 67)
Materials	Housing: Aluminium Flange: Aluminium Shaft : Stainless steel
Shaft/Hollow shaft diameter:	6, 8, 10, 12 mm (other diameters on request)
Bearings lifetime:	2x10 ⁹ rev. at 100% of full rated shaft load (minimum)
Operating temperature	-20...+85 °C
Storage temperature	-30 °C up to +90 °C
Weight approx.	250 g

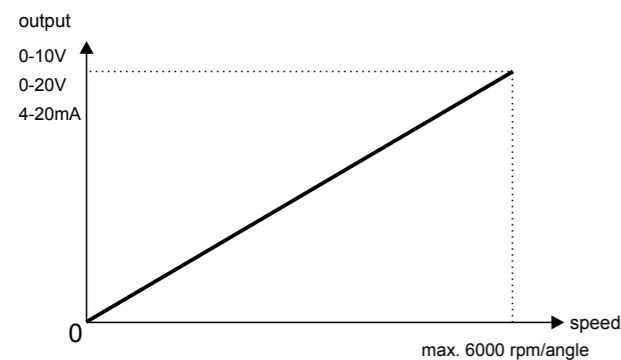
Accessories

Connectors and cables
CRM1205 M12 4 poles female connector or see page 160

Mounting coupling
PF481010 plastic or see page 158

Mounting accessories
SF58B square flange or see page 156-157

Pulse Diagram



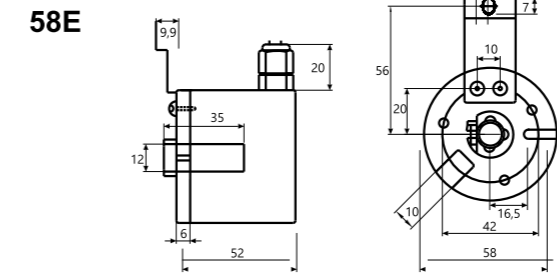
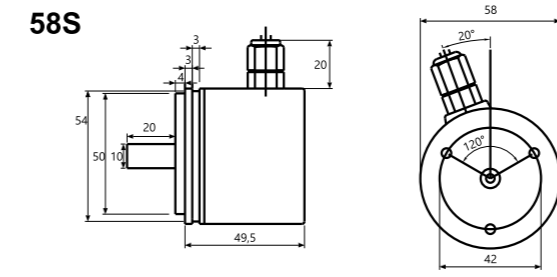
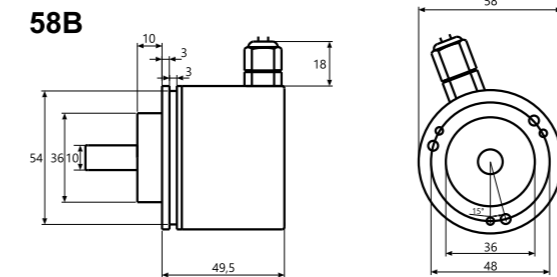
FNC Tacho Analog Output Versus Speed

Mechanical Dimensions
Cable/Connector Wiring, Part Number

FNC Tacho Analog Output Versus Speed



Mechanical Dimensions



Cable Wiring

Function	Color	Renk	Explanation
+VB	Brown	Kahve	Supply voltage
GND	White	Beyaz	Ground
V	Green	Yeşil	Voltage output
A	Red	Kırmızı	Current output

Connector Wiring

Connector Type	+Vcc	GND	V	A	NC
CRM1204	1	2	3	4	
CRM1205	1	2	3	4	5

Encoder Part Number

FNC T 58 B 8 C1 T15 30V - R2

- Housing:** 58 : 58mm
- Housing:** 50 : 50mm 58 : 58mm
- Flange Type:** E : End hollow shaft, B : Shaft clamping flange, S : Servo flange
- Shaft diameter :** 4, 6, 8, 10, 12, 14 (Other dimensions on request)
- Output type :** C1 : 4-20mA, V1 : 0-10V, V2 : 0-5V

Electrical Connections:
Cable R2 : radial 2m, shield not connected (standart)
A2 : axial 2m, shield not connected (standart)
CRM1205 : M12 5pin connector

Supply Voltage:
5: 5V in/out 30: 5-30V in/out

Output speed
T60 : Tacho max 6000 rpm
T30 : Tacho max 3000 rpm
T15 : Tacho max 1500 rpm
T960 : Tacho max 0-10V/ 960 rpm
T03 : Tacho max 300 rpm